

Appendix B: Admissions and bed days**1a. Tables to show admissions in the final year for all deaths with cancer as the underlying cause (C00-C97) in Wales in 2012:**

Sum of Deaths	Emergency admissions	Elective admissions	Total admissions
8673	17532	9609	27141

% admissions that were emergency	% admissions that were elective
64.6	35.4

Emergency admissions per death	Elective admissions per death	Total admissions per death
2.0	1.1	3.1

1b. Tables to show bed days in the final year for all deaths with cancer as the underlying cause (C00-C97) in Wales in 2012:

Sum of Deaths	Emergency bed days	Elective bed days	Total bed days
8673	198830	77410	276240

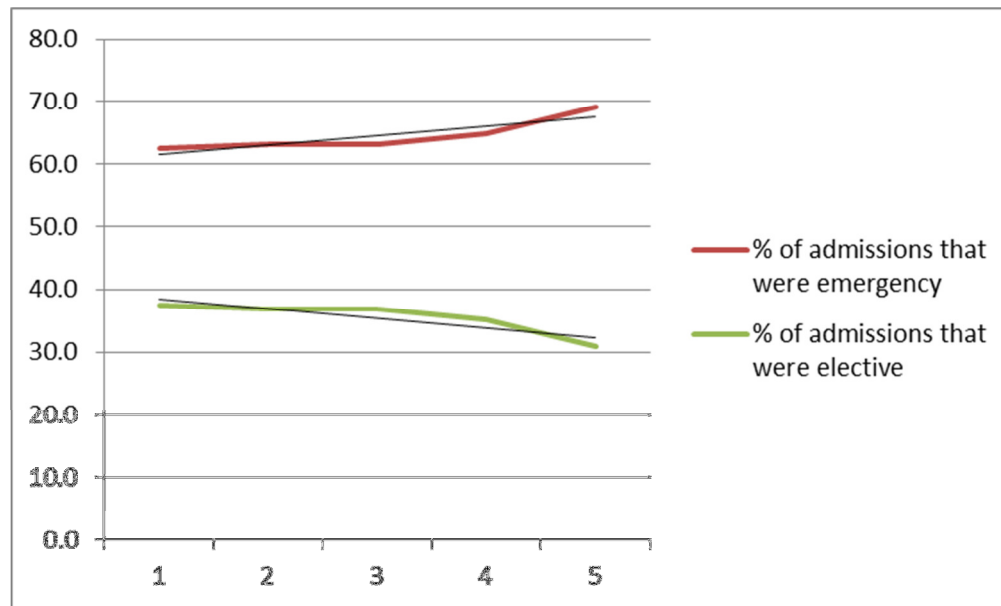
% bed days as an emergency	% bed days that were elective
72.0	28.0

Emergency bed days per death	Elective bed days per death	Total bed days per death
22.9	8.9	31.9

2. Balance between emergency and elective admissions in the final year of life broken down by deprivation quintiles (where 1 is the least deprived and 5 the most deprived) for:

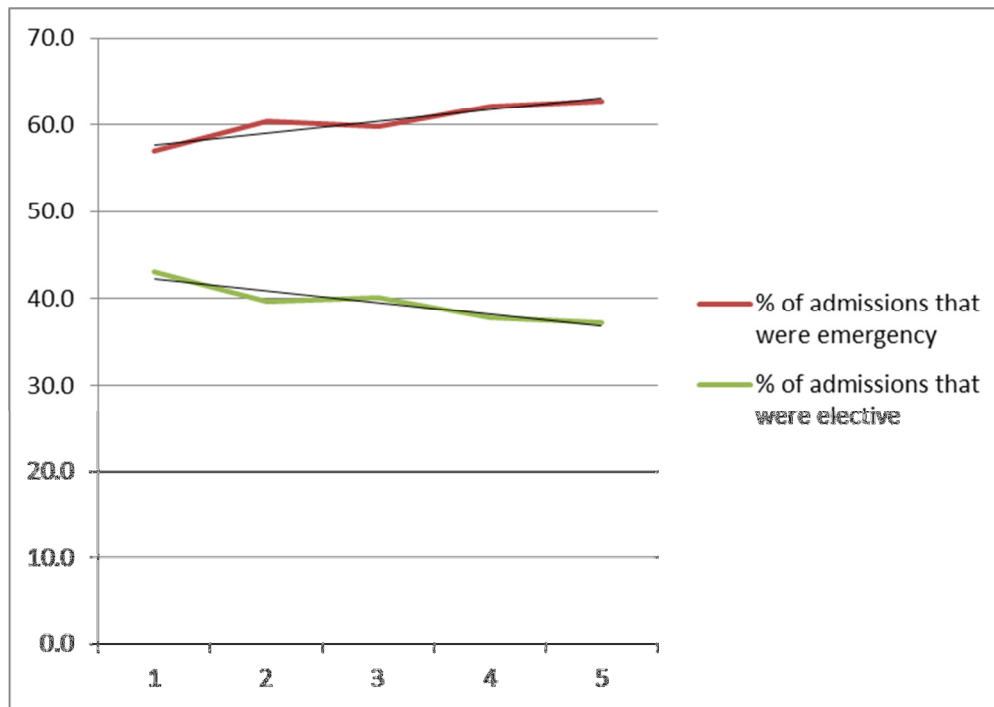
A. *all deaths with cancer (C00-C97) as underlying cause, Wales 2012:*

Deprivation quintile	% of admissions that were emergency	% of admissions that were elective
1	62.5	37.5
2	63.1	36.9
3	63.2	36.8
4	64.9	35.1
5	69.2	30.8
Average	64.6	35.4



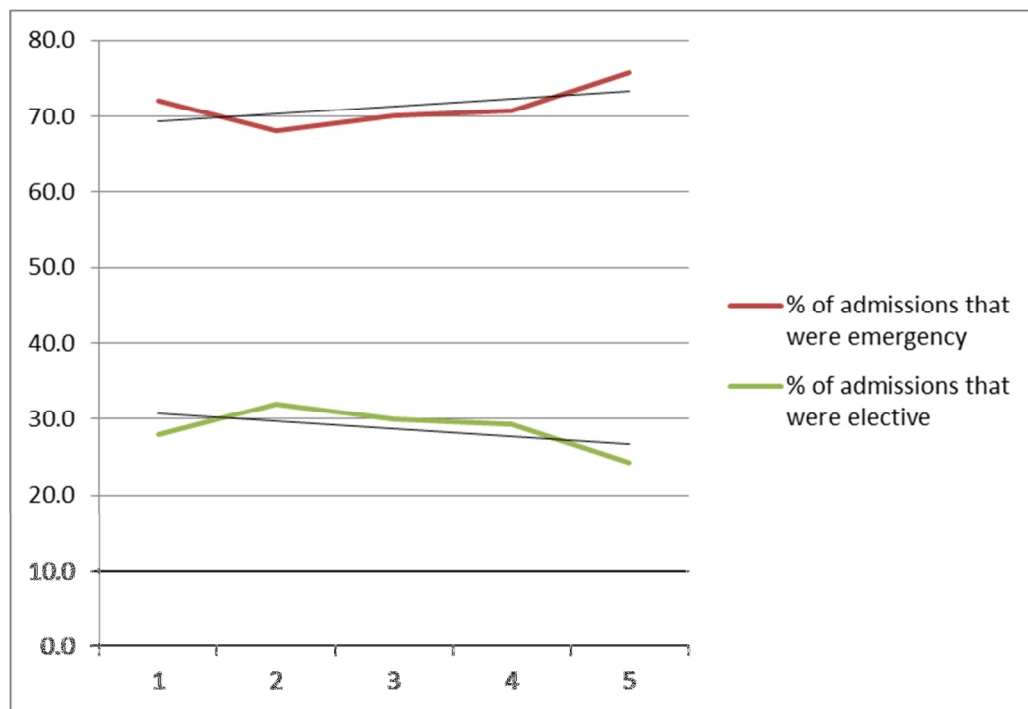
B. Malignant neoplasms of digestive organs as cause (C15-26):

Deprivation quintile	% of admissions that were emergency	% of admissions that were elective
1	56.9	43.1
2	60.4	39.6
3	59.8	40.2
4	62.3	37.7
5	62.8	37.2
Average	60.4	39.6



C. Malignant neoplasms of respiratory and intrathoracic organs as cause (C30-39):

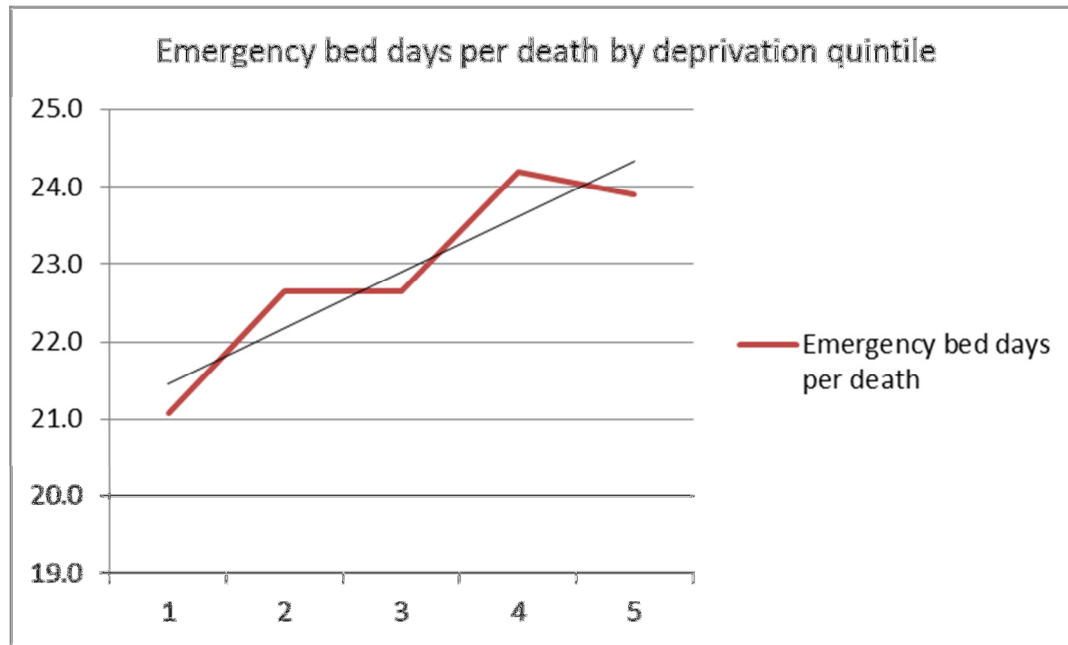
Deprivation quintile	% of admissions that were emergency	% of admissions that were elective
1	72.0	28.0
2	68.1	31.9
3	70.0	30.0
4	70.7	29.3
5	75.8	24.2
Average	71.6	28.4



3. Trends in emergency bed days in the final year of life by deprivation quintiles for:

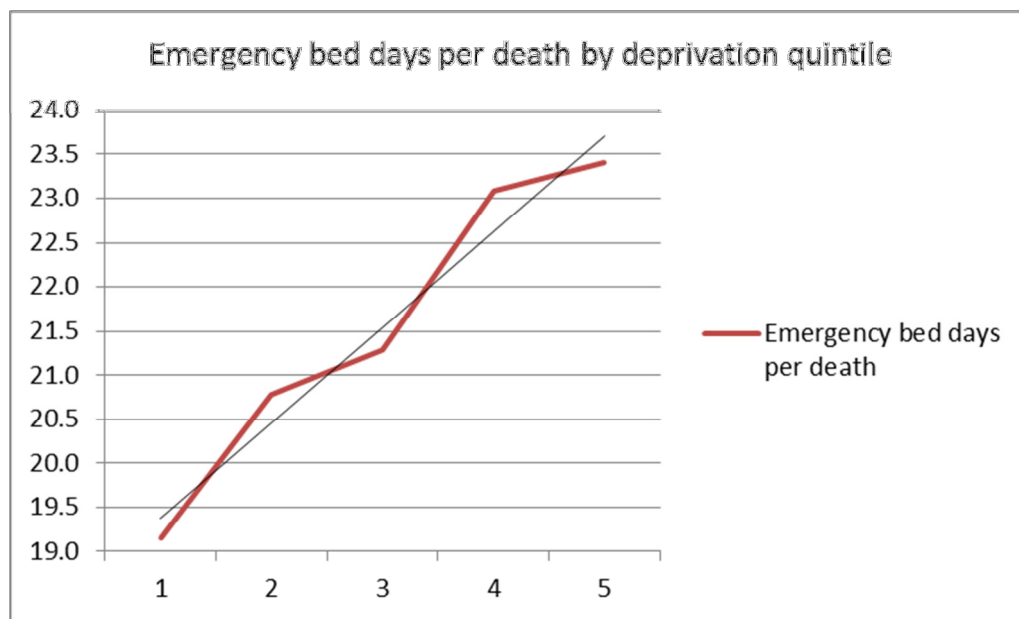
A. all deaths with cancer (C00-C97) as underlying cause, Wales 2012:

Deprivation quintile	Emergency bed days per death
1	21.1
2	22.6
3	22.6
4	24.2
5	23.9
Average	22.9



B. Malignant neoplasms of digestive organs as cause, Wales 2012 (C15-26):

Deprivation quintile	Emergency bed days per death
1	19.1
2	20.8
3	21.3
4	23.1
5	23.4
Average	21.5



C. Malignant neoplasms of respiratory and intrathoracic organs as cause (C30-39):

Deprivation quintile	Emergency bed days per death
1	20.0
2	19.3
3	19.8
4	20.4
5	19.8
Average	19.9

